

Under "7" Building Division

"Group of 50" (On Ice Volunteers)

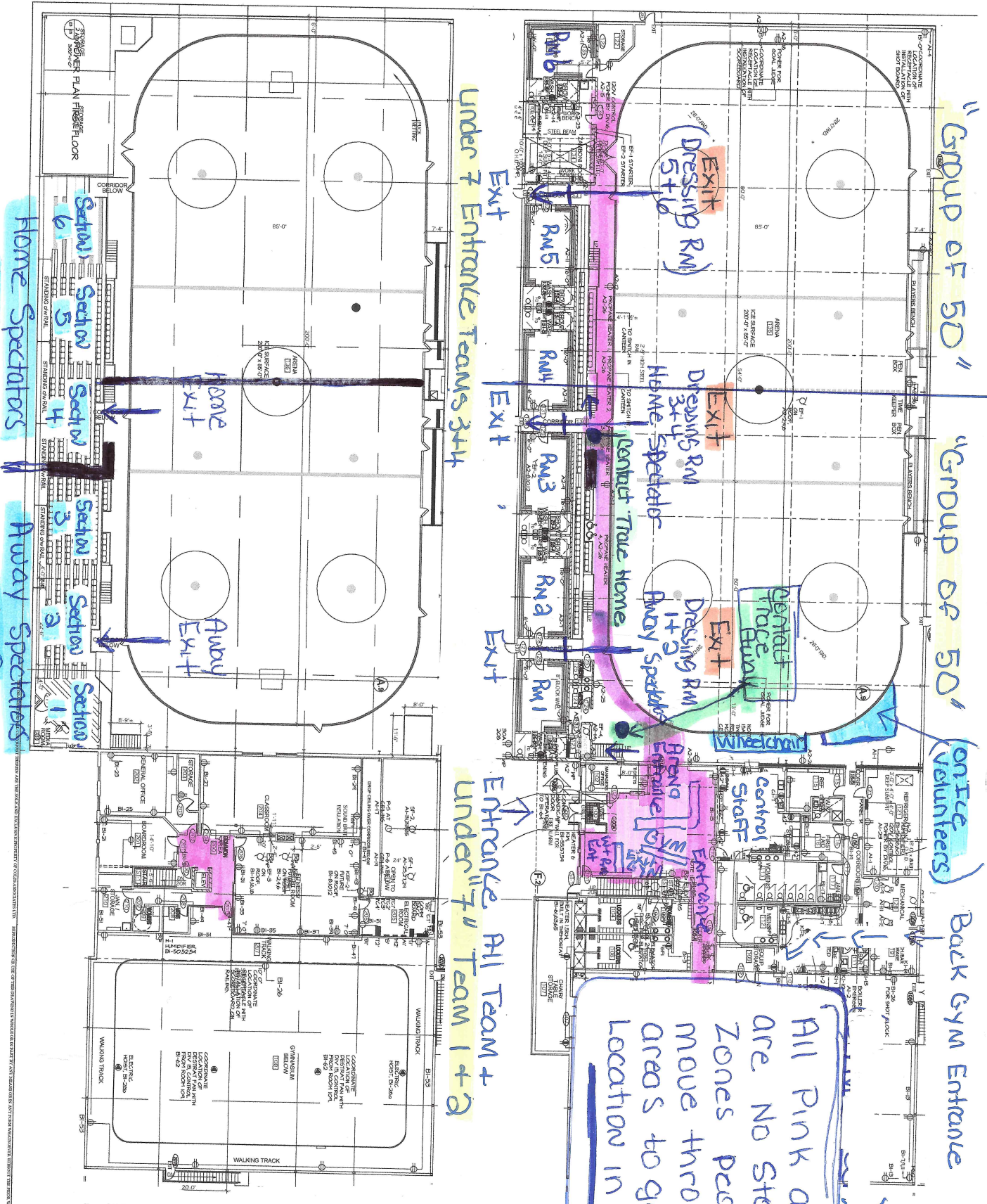
Back Gym Entrance

Under 7 Entrance Teams 3+4

Entrance All Team + Under "7" Team 1+2

All Pink areas are NO STOP ZONES people move through areas to get to a location in Building

Note 1: DISCONNECT SWITCH TO INCLUDE...
Note 2: OPERATED SWITCH TO...
PER ALL ELEVATOR INTERLOCK...
PER ELEVATOR CRITERIA



Home Spectators 4, 5 + 6
Away Spectators 1, 2 + 3

OLYMPIA ELECTRIC
COLTS ASSOCIATES
CONTRACTORS 13 INC
MULTIPURPOSE FACILITY
MAIN AND UPPER FLOOR
POWER
011101 E3